

**Jennifer Holt**, Marketing Communications Specialist  
[Jennifer.holt@thirdwavesys.com](mailto:Jennifer.holt@thirdwavesys.com)

**FOR IMMEDIATE RELEASE**

## **AdvantEdge 7.3 now available from Third Wave Systems**

*Band sawing, keyway broaching and more features added in the new release!*

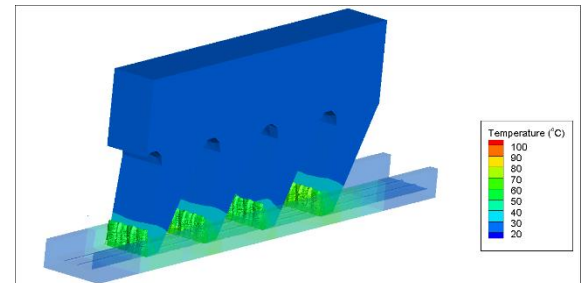
**MINNEAPOLIS, MN.** Third Wave Systems (TWS) is proud to announce that the next version of AdvantEdge v7.3 will be commercially available at the end of August. The release includes two additional processes for studying multi-tooth engagement, enhancements to the results analysis wizard, select material library improvements and reduced license change frequency with new date-based licensing.

The addition of band sawing and keyway broaching enable significant reductions in simulation setup time and costs for customers studying multi-tooth cutting tools. Using standard process parameters, workpiece geometry and an imported STEP tool, AdvantEdge v7.3 is able to generate complex pre-cut Boolean workpieces, simulate and deliver results.

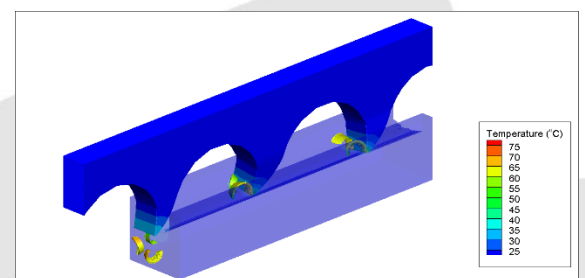
These simulation results enable study of chip-formation, tool breakage and machining effect on the workpiece through contour plots showing temperature, stress, etc. and force plots of the whole tool and per-cutting edge. This capability is a step forward for Third Wave Systems in terms of model complexity, allowing users to get to a solution faster.

The results analysis wizard and automated report was well-received in the prior release with many users requests for additional functionality. The improvements to this capability include German standard text (in addition to Japanese and English), reduction in the amount of report white-space, the Third Wave Systems logo is optional and the picture size can be easily adjusted.

In response to many requests from customers regarding the difficulty of replacing server licenses, AdvantEdge v7.3 has moved to an improved licensing format. The license included with this upcoming release will be based on your software maintenance contract instead of the specific version of the software.



**AdvantEdge Broaching Simulation**



**AdvantEdge Sawing Simulation**

This means all future releases of the software will not require a new license installation as long as you are up-to-date on your current maintenance contract, reducing license installation once a year for most customers. Customers with our toolpath optimization software Production Module should not worry, this license has been designed and tested to ensure compatibility.

**ABOUT THIRD WAVE SYSTEMS, INC.** > Third Wave Systems ([www.thirdwavesys.com](http://www.thirdwavesys.com)) develops and sells premier materials-based modeling software and services for machining solutions. Innovative manufacturing companies implement these solutions to dramatically reduce costs of machined components, accelerate design cycles, improve part quality and get to market faster.